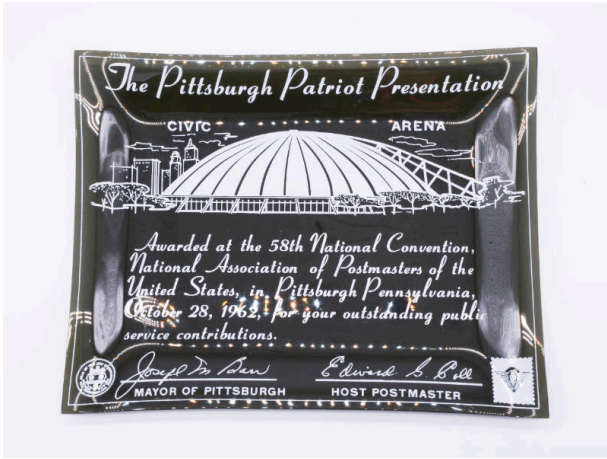


Basic Detail Report



Tray

Date

1962

Primary Maker

Houze Glass Company

Medium

Glass; Applied decoration

Description

Dark tinted glass tray. Tray is rectangular in shape with sloped, raised sides that create a shallow well in the center. Thin, white border around edge of glass with white writing across the top, a white image of the Civic Arena with Pittsburgh skyline in background beneath that, and white text across the bottom. Viewer's bottom left corner features the Seal of the City of Pittsburgh, and viewer's bottom right corner features an emblem in the shape of a stamp with a logo and illegible writing in the middle.

Dimensions

Height x Width x Depth: 0.625 x 9 x 7 in. (1.6 x 22.9 x 17.8 cm)