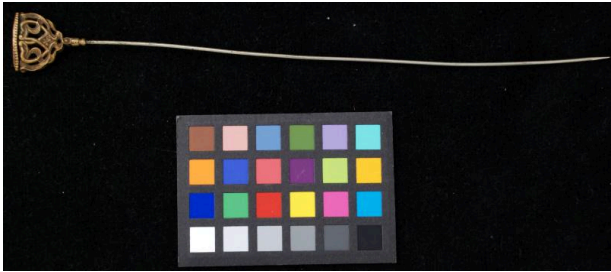


Basic Detail Report



Hatpin

Date
c. 1900

Medium
brass

Description

Brass hatpin. Charm at top: flat oval top plaque with engraved monogram; bottom of charm has two hearts intertwined with ribbon-like lines; small flower at bottom. Hollow center.

Dimensions

8.875 x 0.875 x 0.25 in. (22.5 x 2.2 x 0.6 cm)