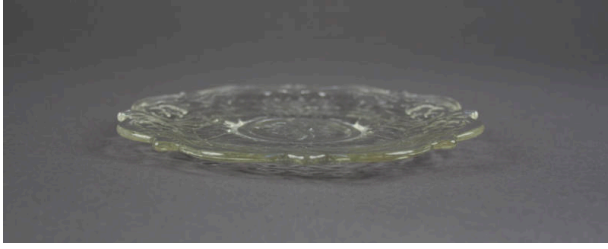


Basic Detail Report



Plate, Butter

Date

1920-1939

Primary Maker

McKee Glass Company

Medium

Glass

Description

Colorless glass bread and butter plate. Non lead. Pressed. Rock Crystal pattern. Fire polished. Low footed plate with scalloped edge.

Dimensions

Height x Diameter: 0.688 × 6.75 in. (1.7 × 17.1 cm)