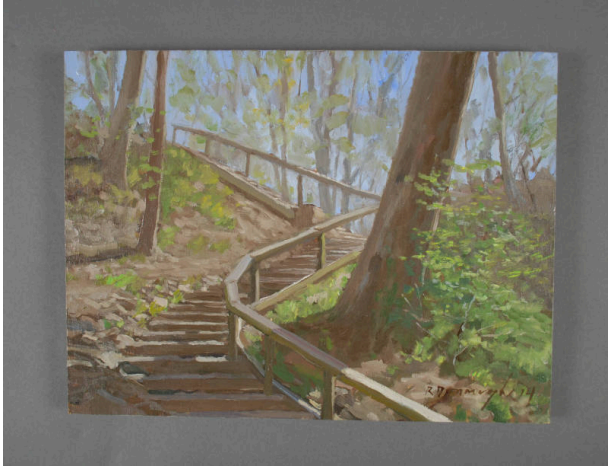


Basic Detail Report



Regent Square

Date

2014

Primary Maker

Ron Donoughe

Medium

Varnish/Glue/Ink/Paper/Paint/Wood/Birch/Graphite/Oil Paint

Description

Oil painting on Baltic birch panel. Rectangular. Depiction of part of the Biddle Trail in Frick Park in the Regent Square neighborhood of Pittsburgh. Scene shows uphill perspective of a wooden staircase that curves from the top left-center (background), to the center-right, to the lower left foreground of the painting. Scene is in the woods, and the stairs are surrounded by brown earth, shorter green shrubbery, and the brown trunks of taller trees. Blue sky visible through the trees across the top section of the painting. Artist's signature in the lower right corner painted in brown. Front of painting covered in transparent varnish. Sides are painted gray. Unpainted back. Text on back in black ink: in the top left corner is the series number, across the top-center is the title, in the top right corner is the date, and across the lower center section is the artist name. Wood cleat glued to center on back.

Dimensions

9 x 12 x 0.75 in. (22.9 x 30.5 x 1.9 cm)