

# Basic Report

---



**Title:** Sign, Advertising  
**Date:** 1940-1949  
**Primary Maker:** McBride Sign Company  
**Medium:** Enameled steel; Neon glass



**Title:** Portrait of C.W. Heppenstall, Sr.  
**Primary Maker:** Malcolm Parcell  
**Medium:** Oil on canvas; Wood

**Title:** Pump, Gasoline  
**Date:** 1967  
**Primary Maker:** The Wayne Pump Company  
**Medium:** Steel; Galvanized rubber; Plastic

**Title:** Automobile  
**Date:** 1936  
**Primary Maker:** Ford Motor Company  
**Medium:** Metal; Rubber; Plastic; Glass; Paint



**Title:** Cookware  
**Date:** 1915  
**Primary Maker:** The Aluminum Cooking Utensil Company, Inc.  
**Medium:** Aluminum; Steel; Paper; Ink



**Title:** Automobile  
**Date:** 1967  
**Primary Maker:** Westinghouse Electric Corporation  
**Medium:** metal, fabric, rubber, plastic



**Title:** Toy, Pull  
**Date:** c.1926  
**Primary Maker:** Wolverine Supply and Manufacturing Company  
**Medium:** Metal; Metal plating; Paint; Wood; Threaded cord



**Title:** Toy, Sand  
**Date:** c.1918  
**Primary Maker:** Wolverine Supply and Manufacturing Company  
**Medium:** Metal; Paint



**Title:** Sign, Trade  
**Date:** 1958  
**Primary Maker:** United States Steel Corporation  
**Medium:** Stainless steel; Glass; Neon



**Title:** Iron, Waffle  
**Date:** 1933  
**Primary Maker:** The Hall China Company  
**Medium:** Metal; Ceramic; Paper; Wire



**Title:** Pen  
**Date:** c. 1985  
**Primary Maker:** A.T. Cross Company  
**Medium:** Metal; Plastic; Ink; Pencil lead



**Title:** Model  
**Date:** c. 1941  
**Primary Maker:** Dravo Corporation  
**Medium:** Glass; Wood; Plastics



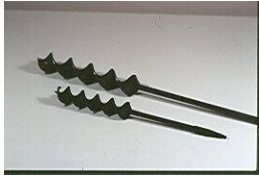
**Title:** Bottle  
**Date:** 1885-1889  
**Primary Maker:** H.J. Heinz Company  
**Medium:** glass, paper, tin



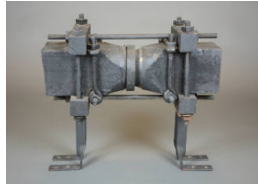
**Title:** Sample, Sales  
**Date:** c. 1968  
**Primary Maker:** Max Azen's Furs  
**Medium:** Fur; Felt; Paper; Clay; Metal



**Title:** Pan, Cake  
**Medium:** Metal; Food remnants



**Title:** Auger, Spiral  
**Date:** c. 1990  
**Primary Maker:** Snell Manufacturing Company  
**Medium:** Cast steel



**Title:** Pipe  
**Date:** c. 1915  
**Medium:** Wood; Metal; Plastic; Paint



**Title:** Pipe  
**Date:** c. 1880  
**Medium:** Metal

**Title:** Pitcher  
**Date:** 1940-1941  
**Primary Maker:** The Hall China Company  
**Medium:** Ceramic; Glaze



**Title:** Bottle  
**Date:** 2001  
**Primary Maker:** H.J. Heinz Company  
**Medium:** Plastic; Ketchup; Ink



**Title:** Piece, Display  
**Date:** 1913-1945  
**Primary Maker:** The Litho-Etching Corporation  
**Medium:** Wood; Metal; Plastic; Fabric; Glass



**Title:** Wrench, Open-End  
**Date:** c. 1960  
**Primary Maker:** United States Steel Corporation  
**Medium:** steel; paper tag; ink; wire



**Title:** Bowl, Eating  
**Primary Maker:** Mayer Pottery Company  
**Medium:** Glazed stoneware



**Title:** Drawing  
**Date:** 1879  
**Primary Maker:** Jonathan Ord  
**Medium:** Paper; Cardboard; Watercolor; Ink



**Title:** Component, Vehicle  
**Date:** c. 1968  
**Medium:** Aluminum



**Title:** License, Bicycle  
**Date:** 1897  
**Medium:** Aluminum; Paint; Paper; Ink; Glue



**Title:** Sample  
**Date:** 1890  
**Primary Maker:** Pittsburgh Reduction Company  
**Medium:** Alumina



**Title:** Electric Furnaces  
**Date:** 1984  
**Primary Maker:** Tom Dawson  
**Medium:** Oil on canvas



**Title:** South Duquesne Mills  
**Date:** 1930  
**Primary Maker:** Johanna Knowles Woodwell Hailman  
**Medium:** Paint; Canvas; Wood



**Title:** Capsule, Time  
**Date:** 1939  
**Primary Maker:** Westinghouse Electric and Manufacturing Company  
**Medium:** Glass, Copper alloy; various materials in tube

**Title:** Mold  
**Date:** c.1938  
**Medium:** Cast iron



**Title:** Jar, Condiment  
**Date:** 1872-1875  
**Primary Maker:** Heinz Noble and Company  
**Medium:** Glass; Porcelain



**Title:** Hat, Hard  
**Date:** 1960  
**Primary Maker:** Mine Safety Appliances Company  
**Medium:** Plastic; rubber; paper; fabric



**Title:** Vase, Flower  
**Date:** 1934-1935  
**Primary Maker:** Lurelle Guild  
**Medium:** Aluminum



**Title:** Radio  
**Date:** c. 1957  
**Primary Maker:** Westinghouse Electric Corporation  
**Medium:** Metal; Plastic

**Title:** Badge, Membership  
**Date:** 1969  
**Medium:** Metal; Cloth; Enamel

**Title:** Box  
**Date:** c. 1936  
**Primary Maker:** Louis Blum  
**Medium:** Aluminum; Fabric; Wood



**Title:** Commemorative  
**Date:** 1895  
**Primary Maker:** Westinghouse Electric and Manufacturing Company  
**Medium:** Metal, Rubber (?), Rubber impregnated fiber (?), Plastic



**Title:** Eyeglasses  
**Date:** 1990-1999  
**Medium:** Glass; Various metals; Plastics



**Title:** Compote  
**Date:** c.1835  
**Primary Maker:** Curling, Robertson and Company  
**Medium:** Glass

**Title:** Badge, Identification  
**Date:** c.1942  
**Medium:** Metal, Plastic; Paper; Ink; Photographic emulsion



**Title:** Can, Food Storage  
**Date:** c. 1970  
**Medium:** Metal, Paper, Ink





**Title:** Tray, Desk  
**Date:** c.1925  
**Medium:** Metal; Paint



**Title:** Coal Police  
**Date:** 1970  
**Primary Maker:** John Michael O'Cilka  
**Medium:** Fiberboard; Canvas; Paint;



**Title:** Jug  
**Date:** c. 1882  
**Medium:** Ceramic; Wire; Wood



**Title:** Percolator  
**Date:** c. 1913  
**Primary Maker:** Westinghouse  
**Medium:** Metal; Glass; Fiber



**Title:** Stand, Display  
**Date:** c. 1930  
**Primary Maker:** D.L. Clark Company  
**Medium:** Glass; Rubber; Paint



**Title:** Bulb, Light  
**Date:** 1893  
**Primary Maker:** Westinghouse  
**Medium:** Glass; metal; wood



**Title:** Pendant, Charm  
**Date:** 1893  
**Medium:** Gutta-percha;  
Metal wire



**Title:** Mallet, Caulking  
**Date:** 1870-1879  
**Medium:** Wood; Metal



**Title:** Bottle  
**Date:** c. 1850  
**Primary Maker:** Samuel M.  
Kier  
**Medium:** Glass

**Title:** Birdhouse  
**Date:** c. 1950  
**Primary Maker:** Tony Sarge  
**Medium:** glass; metal

**Title:** Bookend  
**Date:** c.1938  
**Primary Maker:** Kenneth R.  
Haley Glass Company  
**Medium:** Glass



**Title:** Cooler  
**Date:** c. 1995  
**Primary Maker:** Igloo  
Products Corporation  
**Medium:** Plastic; Paper; Ink



**Title:** Jar, Cookie  
**Date:** 1985  
**Medium:** Glass

**Title:** Dish, Candy  
**Date:** c. 1945  
**Primary Maker:** Jacob H.  
Millstein  
**Medium:** Glass; Cardboard;  
Ink



**Title:** Pitcher, Syrup  
**Date:** 1884-1900  
**Primary Maker:** Adams &  
Company  
**Medium:** Glass; Metal,  
possibly tin; Cork, possibly

**Title:** Target  
**Date:** 1877  
**Primary Maker:** Captain  
Adam H. Bogardus  
**Medium:** Glass



**Title:** Burning of Union  
Depot 1877  
**Date:** c. 1881  
**Primary Maker:** William  
Gillespie Armor  
**Medium:** Paper; Wood;  
Paint

**Title:** Platter  
**Date:** 1929-1932  
**Primary Maker:** Charles A.  
Schuck  
**Medium:** Glass

**Title:** Fan, Electric  
**Primary Maker:**  
Westinghouse Electric and  
Manufacturing Company  
**Medium:** Metal, Paint,  
Wood (?), Wire



**Title:** Adz, Shipwright's  
**Date:** c. 1870  
**Medium:** Wood; Steel

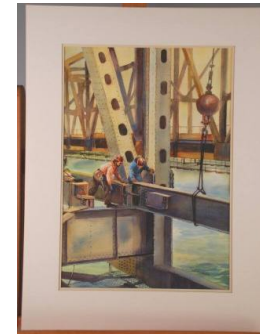


**Title:** Bowl  
**Date:** 1800-1840  
**Primary Maker:** New  
Geneva Glass Works  
**Medium:** Glass



**Title:** Madder Mills  
**Date:** 1982  
**Primary Maker:** Joseph  
Jacobs  
**Medium:** Watercolor on  
paper

**Title:** The Duquesne  
Works  
**Date:** c. 1940  
**Primary Maker:** Harry  
McEwen Pettit  
**Medium:** Oil paint; Paper;  
Wood; Metal; Oil paint on  
canvas



**Title:** American Bridge  
**Date:** 1983  
**Primary Maker:** Jess Hager  
**Medium:** Mat board;  
Watercolor paint



---

**Title:** Sheet, Cookie  
**Primary Maker:** WearEver,  
subsidiary of ALCOA, Inc.  
**Medium:** Aluminum; Metal



**Title:** Door  
**Date:** c. 1946  
**Primary Maker:** Louis Blum  
**Medium:** Aluminum

**Title:** Grille  
**Date:** 1920-1940  
**Primary Maker:** Hyman  
Blum Company  
**Medium:** Iron; Linseed oil



**Title:** Sauceboat  
**Primary Maker:** Mayer  
Pottery Company  
**Medium:** Glazed stoneware

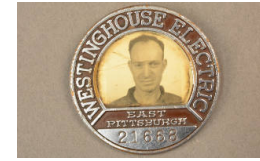
**Title:** Sample, Sales  
**Date:** 2002  
**Primary Maker:** Hyman  
Blum Company  
**Medium:** Aluminum

**Title:** Ladle, Foundry  
**Date:** c. 1960  
**Primary Maker:** United  
States Steel Corporation  
**Medium:** steel



**Title:** Set, Desk  
**Medium:** Aluminum; Paper;  
Glue; Ink; Plastic; Brass;  
Paint

**Title:** Oven, Electric  
**Date:** 1925-1929  
**Primary Maker:**  
Westinghouse Electric and  
Manufacturing Company  
**Medium:** Metal; Porcelain  
enamel; Paint; Plastic



**Title:** Badge, Identification  
**Primary Maker:**  
Westinghouse  
**Medium:** Metal; Plastic;  
Paper



**Title:** Sign, Trade  
**Date:** 1965  
**Medium:** Metal; Plastic



**Title:** Sprayer, Hand  
**Primary Maker:** Gulf Oil  
**Medium:** Metal/paint/wood



**Title:** Can  
**Primary Maker:** Gulf Oil  
**Medium:** Metal; paint;  
petroleum by-product

**Title:** Engine, Automotive  
**Date:** c. 1924  
**Primary Maker:** Aluminum Company of America  
**Medium:** Aluminum;  
Wiring; Ferrous metals;  
Phenolic resins



**Title:** Bulkhead  
**Date:** 1968  
**Primary Maker:** Aluminum Company of America  
**Medium:** Aluminum



**Title:** Coffeepot  
**Date:** c. 1920  
**Medium:** Aluminum; Wood;  
Paint; Steel; Paper; Ink;  
Tape

**Title:** Jar, Food Storage  
**Date:** 1867  
**Primary Maker:** William Frank  
**Medium:** Glass

**Title:** Headlamp, Locomotive  
**Date:** 1919  
**Primary Maker:** MacBeth-Evans Glass Company  
**Medium:** Glass



**Title:** Flask  
**Date:** 1830-1836  
**Primary Maker:** Bakewell, Page & Bakewells  
**Medium:** Glass



**Title:** Bottle  
**Date:** 1869-1872  
**Medium:** Glass



**Title:** Machine, Vending  
**Date:** c. 1960  
**Medium:** Metal, Plastic



**Title:** Package, Product  
**Date:** 2010  
**Primary Maker:** H.J. Heinz Company  
**Medium:** Plastic; Ketchup; Styrofoam

**Title:** Toaster  
**Date:** 1917  
**Primary Maker:** Westinghouse Electric and Manufacturing Company  
**Medium:** Metal; Plastic; Ceramic

**Title:** Sign, Trade  
**Date:** c. 1900  
**Medium:** Wood; Metal



**Title:** Toy  
**Medium:** Wood, Coated string, Metal



**Title:** Television  
**Date:** 1954  
**Primary Maker:** Westinghouse Electric and Manufacturing Company  
**Medium:** Metal; Wood; Glass; Paint



**Title:** Holder, String  
**Date:** 1895-1905  
**Medium:** Tin; Paint; Metal; String; Cardboard



**Title:** Horseshoe  
**Date:** 1895  
**Medium:** Aluminum; Steel



**Title:** Fragment  
**Medium:** Wood



**Title:** Bowl, Serving  
**Date:** 1935  
**Primary Maker:** Lurelle Guild  
**Medium:** Aluminum; Brass; Glue; Paper; Ink



**Title:** Dish, Salt  
**Date:** 1828-1831  
**Primary Maker:** Stourbridge Flint Glass Works  
**Medium:** Glass



**Title:** Sample, Sales  
**Date:** c. 1900  
**Primary Maker:** Viko  
**Medium:** Aluminum; Cardboard; Ink; Ribbon; Paper



**Title:** Bracelet, Charm  
**Date:** 1970-1979  
**Medium:** Metal



**Title:** Badge, Identification  
**Date:** c. 1895  
**Medium:** Paper; Metal; Plastic

**Title:** Chimney, Lamp  
**Date:** c.1880  
**Primary Maker:** MacBeth-Evans Glass Company  
**Medium:** Glass; Cardboard; Ink



**Title:** Jones & Laughlin Mills  
**Date:** 1881  
**Primary Maker:** Albert Francis King  
**Medium:** Oil paint; Wood

**Title:** Portrait of Edward Dithridge  
**Date:** 1860  
**Medium:** Oil; Canvas; Nails; Wood; Metal; Brass



**Title:** Jug  
**Date:** 1800-1845  
**Primary Maker:** New Geneva Glass Works  
**Medium:** Glass



**Title:** Commemorative  
**Date:** 1875  
**Primary Maker:** Edgar Thompson Works  
**Medium:** Steel; Paint; Pine wood; Wire nails; Ink

**Title:** Bust  
**Date:** 1927  
**Primary Maker:** Fred A. Vuillemin  
**Medium:** Glass



**Title:** Jar  
**Date:** 1935  
**Primary Maker:** Lurelle Guild  
**Medium:** Aluminum; Brass; Paper; Glue; Ink

**Title:** Mask, Cup  
**Medium:** Wood; Glass; Metal



**Title:** Flask  
**Date:** 1833-1837  
**Primary Maker:** Williamsport Glass Works  
**Medium:** lass



**Title:** Jar  
**Date:** 1920  
**Primary Maker:** H.J. Heinz Company  
**Medium:** Glass; Paper; Vinegar; Cherries; Onions



**Title:** Violin  
**Date:** 1934  
**Primary Maker:** Aluminum Company of America  
**Medium:** Aluminum, Bakelite, meta , wire, leather



**Title:** Bottle, Condiment  
**Date:** 1872-1875  
**Medium:** Glass; Paper



**Title:** Pittsburgh-The Old City and the New  
**Date:** 1913  
**Primary Maker:** Thornton Oakley  
**Medium:** charcoal or graphite, paper, gouache, wood



**Title:** Cap  
**Date:** 1900  
**Medium:** Fabric (linen or cotton)



**Title:** Knob, Furniture  
**Date:** 1828-1832  
**Primary Maker:** Bakewell, Page & Bakewell  
**Medium:** Glass; Ink(?); Paint (?)



**Title:** Bench, Glassmaker's  
**Medium:** Wood; Iron



**Title:** Thermometer, Culinary  
**Primary Maker:** Palmer Thermometers, Inc.  
**Medium:** Copper; Glass; Wood



**Title:** Set, Desk  
**Date:** c.1880  
**Medium:** Base: Wood, Mahogany, Brass, Tortoiseshell; Pens: Steel, Wood, Cork; Inkwells: Cut glass





**Title:** Refrigerator  
**Date:** 1930  
**Primary Maker:** Westinghouse Electric and Manufacturing Company  
**Medium:** Metal, Wood, Enamel



**Title:** Dish, Chafing  
**Date:** c. 1902  
**Medium:** silver-plated metal, brass, copper, wood



**Title:** Portrait of Henry J. Heinz  
**Date:** 1915  
**Primary Maker:** Albert Francis King  
**Medium:** Oil on masonite

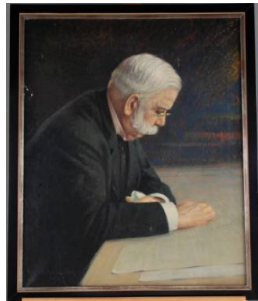
**Title:** Portrait of Frederick J. Fritz Close  
**Primary Maker:** Baron  
**Medium:** Canvas; Paint; Wood



**Title:** Portrait of Henry Clay Frick  
**Primary Maker:** Leopold Gould Seyffert  
**Medium:** Oil on canvas; Wood

**Title:** Coal Barge  
**Date:** 1978  
**Primary Maker:** Jess Hager  
**Medium:** Illustration board; Paint

**Title:** Submarine Type Ladle  
**Date:** 1983  
**Primary Maker:** Jess Hager  
**Medium:** Mat board; Watercolor paint; Foam board



**Title:** Portrait of George Westinghouse  
**Date:** 1917  
**Primary Maker:** C.J. Moran  
**Medium:** Oil on Canvas



**Title:** Firkin  
**Date:** c.1880  
**Primary Maker:** F. & J. Heinz Company  
**Medium:** Wood; Paper



**Title:** Target, Skeet  
**Date:** c. 1941  
**Primary Maker:** Duncan & Miller Glass Company  
**Medium:** Clay

**Title:** Kit, Sales Sample  
**Date:** 1910-1940  
**Primary Maker:** Gulf Oil Corporation  
**Medium:** Glass; Metal; Paper; Cloth; Oil



**Title:** Tube, Laboratory  
**Medium:** Glass; Metals



**Title:** Container, Food Preparation  
**Date:** 1939  
**Primary Maker:** The Hall China Company  
**Medium:** Ceramic; Glaze



**Title:** Jacket  
**Date:** 1960-1980  
**Primary Maker:** Don Alleson  
**Medium:** Nylon; Stainless steel; Plastic; Cotton

**Title:** Magnetometer  
**Date:** c. 1945  
**Medium:** Aluminum; Steel



**Title: Ammeter**

**Date:** 1889

**Primary Maker:**

Westinghouse Electric and  
Manufacturing Company

**Medium:** Metal; Glass;  
Marble; Brass; Plaster



**Title: Machine, Broom**

**Primary Maker:** Johnson

Equipment Company

**Medium:** Wood; Iron

**Title: Toaster**

**Date:** 1953

**Primary Maker:**

Westinghouse Electric  
Corporation

**Medium:** Metal; Plastic;  
Fabric



**Title: Model**

**Date:** c. 1944

**Medium:** Metal; Paint; Wood